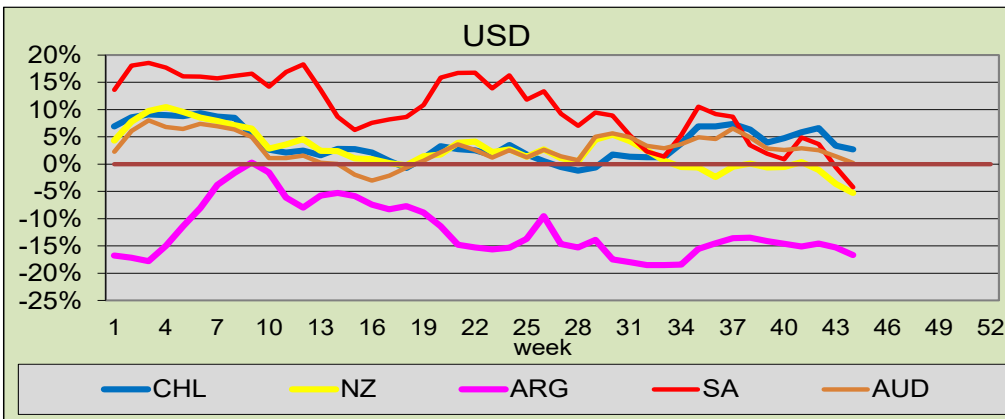
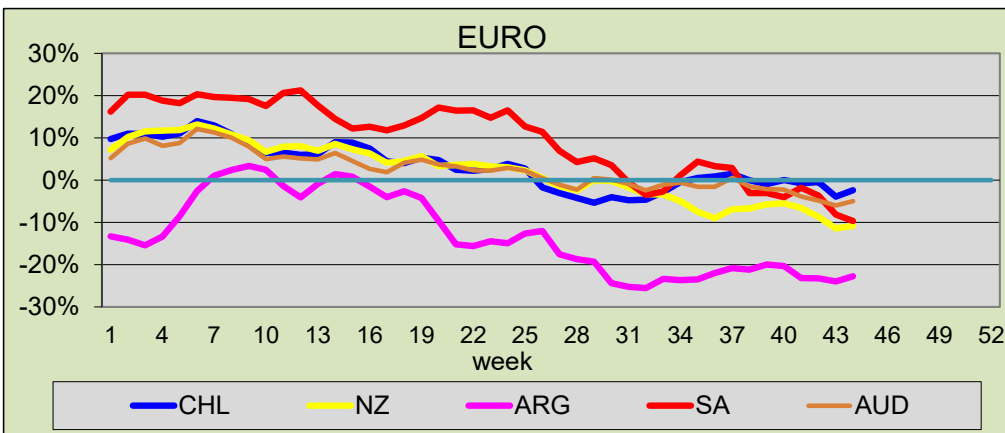


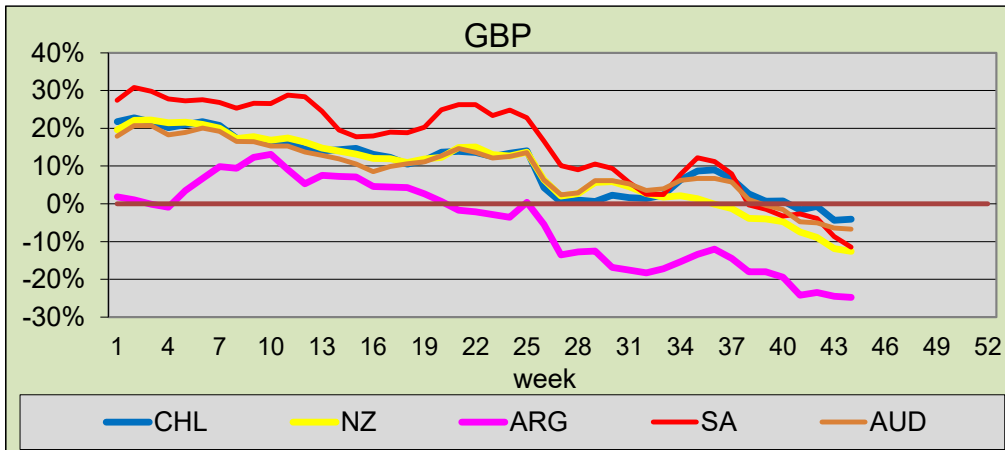
EXCHANGE RATES



USD (Week 44)	
CHL	3%
NZ	-5%
ARG	-17%
SA	-4%
AUD	0%



EUR (Week 44)	
CHL	-2%
NZ	-11%
ARG	-23%
SA	-10%
AUD	-5%



GBP (Week 44)	
CHL	-4%
NZ	-13%
ARG	-25%
SA	-11%
AUD	-7%